



CLAVE DECT DONGLE

Dongle with dual functions both acting as a DECT base and a DECT handset.

PRODUCT SHEET

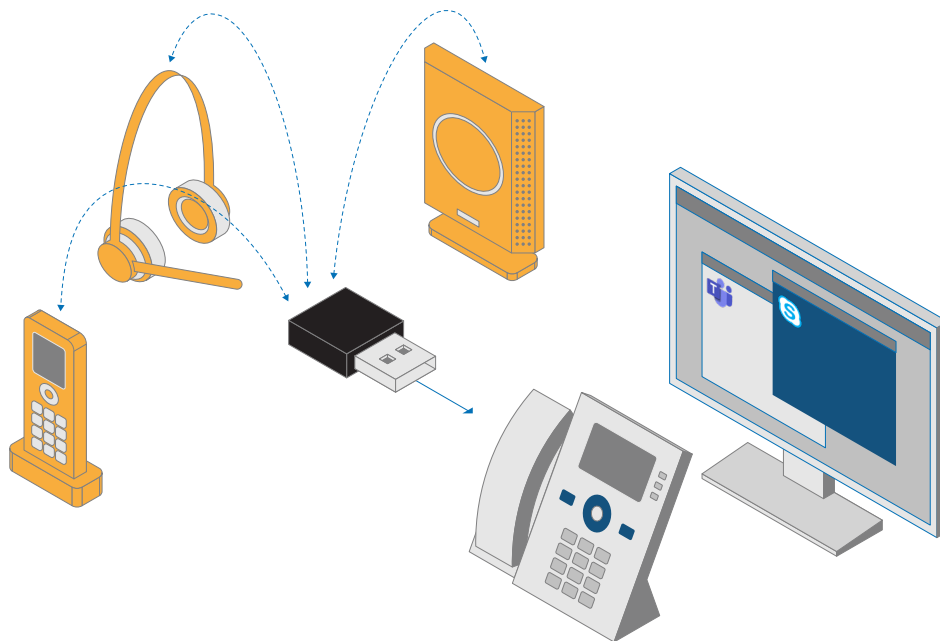
The Clave DECT dongle provides flexible wireless connectivity to anyone with office work whether in the office, at home, or on the go.

WHEN RELIABLE AND FLEXIBLE CONNECTIVITY MATTER

Many types of office work can be done from anywhere as long as you have a reliable and flexible communication solution that allows you to connect seamlessly with colleagues, customers, suppliers, etc. – no matter if you are in the office, at home, or on the go.

We deliver wireless IP telephony products and sub-systems used in communications systems for professional use. With over 30 years of experience in communication solutions, we have gained the expertise to deliver products with outstanding audio quality and much wider range compared to other solutions in the market.

The Clave DECT dongle connects seamlessly different types of communication devices - it can both act as a fixed DECT base providing connectivity between a Clave DECT headset and e.g., a PC or a deskphone as well as a portable UH DECT handset providing connectivity between a deskphone and the UH DECT VoIP infrastructure. The dongle is a USB type A dongle with a slide switch which enables you to quickly switch between fixed and portable mode.

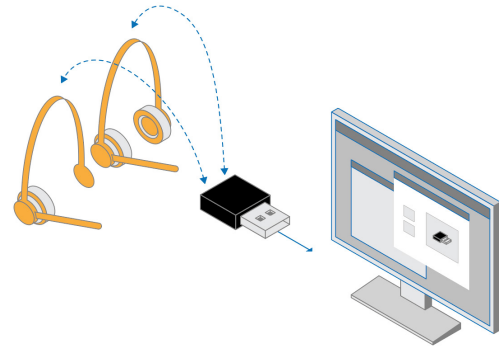


USER SCENARIOS

Besides offering an end-to-end communication solution, the Clave DECT dongle offers three additional user options: DECT dongle on PC, DECT dongle on corded phone (fixed part), and DECT dongle on corded phone (portable part) - each providing a different system depending on the user scenario.

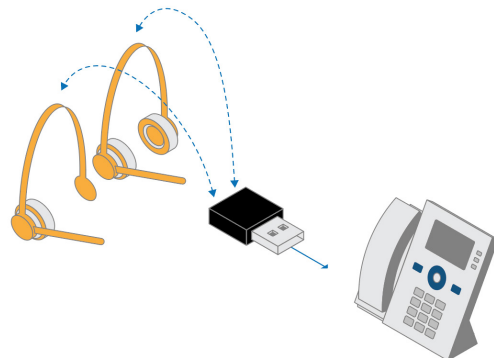
DECT DONGLE ON PC

You can connect the DECT dongle to a laptop/PC and it acts like a base with call control for a DECT headset. Registration of the headset is done by setting both the dongle and the headset in registration mode. You can select the active audio device (headset) via the Windows / MacOS PC. All calls are originated from the PC using e.g., MS Teams and you can mute / unmute the headset from the PC or on the headset itself.



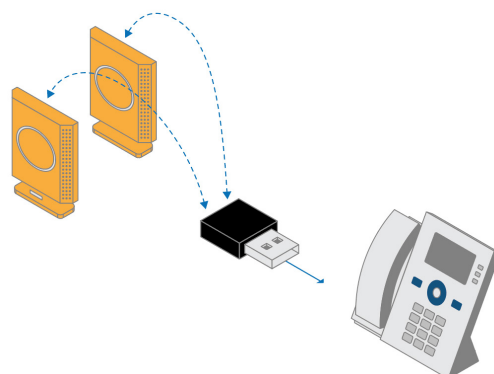
DECT DONGLE ON DESKPHONE (FIXED PART)

You can connect the DECT dongle to a deskphone (with USB port) and it acts like a base for a DECT headset. Registration of the headset is done by setting both the dongle and headset in registration mode. You can select the active audio device (headset) on the deskphone which requires deskphone support - we provide the USB HID interface. All calls are originated from the deskphone and you can mute / unmute the headset from the headset itself.



DECT DONGLE ON DESKPHONE (PORTABLE PART)

You can connect the DECT dongle to a deskphone (with USB port) and it acts like a handset providing connectivity between the deskphone and the UH DECT VoIP infrastructure. This is very useful for work-places with hot desking where it does not matter which desk or deskphone you are using - you can always be reached as your telephone number is stored in the dongle.



TECHNICAL SPECIFICATIONS

FEATURES	SPECIFICATIONS
DIMENSIONS	<ul style="list-style-type: none">• 35mm (L) x 19mm (W)
DECT	<ul style="list-style-type: none">• 1880 - 1895 MHz (Taiwan)• 1880 - 1900 MHz (EMEA)• 1910 - 1920 MHz (Brazil & Uruguay)• 1910 - 1930 MHz (LATAM, Argentina, Chile)• 1920 - 1930 MHz (USA, Canada)
AUDIO	<ul style="list-style-type: none">• G726, BV16, G722, BV32, CELT 128 kbit/s
LED INDICATOR	<ul style="list-style-type: none">• Three LEDs
HARDWARE FEATURES	<ul style="list-style-type: none">• Button for registration and reset• Slider switch for switching between FP and PP mode
CALL FEATURES	<ul style="list-style-type: none">• Call waiting, hold/retrieve
HEADSET SUPPORTED	<ul style="list-style-type: none">• Clave Mono NC, Clave Duo NC, Clave Duo ANC
CONFERENCE SUPPORT	<ul style="list-style-type: none">• Up to 4 users
CUSTOMER LOGO	<ul style="list-style-type: none">• Silk screen
CALL INDICATION LED ON DONGLE	<ul style="list-style-type: none">• Yes
DECT CONNECTION STATUS LED ON DONGLE	<ul style="list-style-type: none">• Yes
CONFIGURABLE	<ul style="list-style-type: none">• Yes, via PC Tool
FIRMWARE UPDATE SUPPORT	<ul style="list-style-type: none">• Yes, via PC Tool
USB CONNECTOR	<ul style="list-style-type: none">• Type A
PC WINDOWS SUPPORT	<ul style="list-style-type: none">• Yes
MACOS SUPPORT	<ul style="list-style-type: none">• Yes
DECT AUDIO SUPPORT	<ul style="list-style-type: none">• Wide-band audio: CELT, G.722, BV32• Narrow-band audio: G.726, BV16
CALL CLIENT SUPPORT	<ul style="list-style-type: none">• Microsoft Teams: Yes• Microsoft Skype for Business: Yes
ADAPTIVE POWER CONTROL (DECT)	<ul style="list-style-type: none">• Yes
ORDERING DETAILS	DESCRIPTION
CLAVE DECT DONGLE	<ul style="list-style-type: none">• Contact United Headsets or more information and offer at info@unitedheadsets.com